

Cusack's Philosophy of Mathematics

Paul T E Cusack, BScE, DULE
 23 Park Ave. Saint John, NB E2J 1R2, Canada.

ABSTRACT

In this paper, we describe the philosophy of Math as determined by Astrotheology Theory. Convergence upon the function being equal to the function is of paramount importance. Also, knowing that the function of the human mind is the golden mean parabola (GMP) is critical. The Philosophy lies at the heart of understating the mission that the human race is to aspire as its final work.

KEYWORDS: *Astrtotheogy; Philosophy of Mathematics; Plato's Forms; Logic; Cusack's Law of Convergence*

INTRODUCTION

In this paper, we introduce the reader to the Philosophy of the Mathematics as found in Astrotheology by the same author.

In Plato's world of Forms there are items or ideas in the imagine that are false. For example, I can think of a yellow elephant, but that does not mean that there is one. The only path that counts in the human mind is where there is the convergence of Mathematics.

If we think of the universe as a binominal tree that expands from $2^0 \Rightarrow 2^{21}$, there are many paths that could be taken, but only one that counts as "something". The physical universe exists only where there is something rather than nothing.

Convergence stems from Calculus, Algebra and Linear Algebra and Geometry. The critical formula is $y=y'$ the function equals its derivative. All the other solutions that are false occur when $y \neq y'$

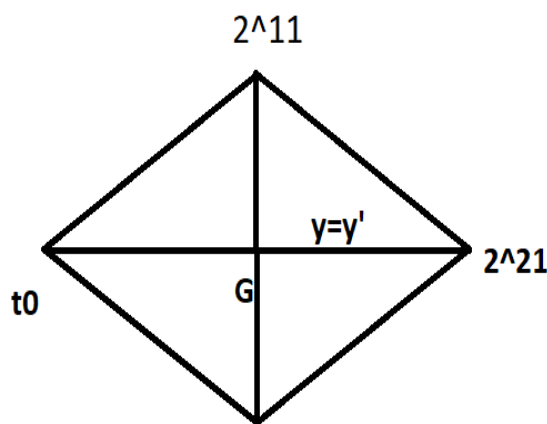
Everything there is is Mass; Energy; time; space and Momentum and Force. From there, we can build a physical universe. Momentum is dependent on velocity and Force is dependent on acceleration. We know by now from Astrotheology that the velocity equals the acceleration ($v=a=ds/dt=d^2s/dt^2$) Space is the cross product of Energy and time. Therefore, from linear algebra, we know $s=|E||t| \sin \theta$. And time is simply Kinetic Energy. $t=KE=1/2Mv^2$. If we have no velocity, we have no time. Mass is equal to the natural logarithm of time $M=Ln t$. With no time, we have no Mass. Total Energy=Mass x $[1/2\pi]$. If we have no Mass, we have no Energy. So Energy, mass, time and space are all dependent upon $y=y'$ or the function equals the derivative.

All Math is filtered by the human mind which has a function of the Golden Mean Parabola (GMP). Math is a mental construct. It only model's reality in that there is convergence. The rest is on a path of nothingness. There is only one solution to Math, and it is the physical universe. The universe is like a giant calculator that solves the convergence problem par excellence.

So, we can have something or nothing. If we have convergence, we have something (1); if we do not have convergence, we have nothing (0).

So, the familiar equation that seems to be a paradox is $1=0$. This occurs frequently in Astrotheology. It is the Ln function.

Binominal Tree



Total Decisions=
3072

Figure 1. Binominal Path

$$E=1/t$$

$$E=t=1$$

$$\text{Mass} = \text{Ln } t$$

$$M = \text{Ln } 1 = 0$$

Mass is proportional to energy. $E = M$

$$\text{But } E=t=1$$

$$E=0=1$$

$$1=0$$

The human mind has been shown previously to obey the Golden Mean Parabola:

$$t^2 - t - 1 = E = 0$$

$$t = 1.618; -0.618$$

$$t^2 - t - 1 = 1$$

$$t = 2; -1$$

$$t = \alpha = 2$$

Cusack's Law of Convergence

All of Mathematics which is described by Logic converges to one solution; the universe is the embodiment of that solution. The mind can think about non-converging Math (Plato's forms) Non-convergence leads to nothingness.

Everything we know about the physical universe is imprinted on the human mind, that is the golden mean parabola. There are non-experienced mathematical truths that have yet to be experienced. But they lead to nothingness and are therefore useless.

Mathematics is aesthetic- the highest form of aesthetics. It occurs where $y=y'$. This is the Law of Beauty.

Mathematic is a branch of logic. There most important statement about the universe seems illogical $1=0$

$$\text{Bu } t \text{ we know that } E=t=1 \quad M = \text{Ln } t = \text{Ln } 1 = 0$$

$$E=M$$

$$1=0$$

If we invoke Platonic Forms,

$$t^2 - t - 1 = E$$

$$M = \text{Ln } t$$

$$T = e^M$$

$$(e^M)^2 - e^M - 1 = E = 0$$

$$(e^M)^2 - e^M - 1 = 0$$

$$1=0$$

$$(e^M) - e^M = 1$$

$$\text{Ln } (e^M)^2 - \text{Ln } e^M = \text{Ln } 1 = 0$$

$$\text{Ln } (e^M)^2 = \text{Ln } (e^M)$$

$$2e^M = M$$

$$2e^{\text{Ln } t} = \text{Ln } t = \text{Ln } 1 = 0$$

$$E^{\text{Ln } t} = 0$$

$$\text{Ln } (e^{\text{Ln } t}) = 0$$

$$\text{Ln } t = 0$$

$$t = 1$$

$$t^2 - t - 1 = E$$

$$1^2 - 1 - 1 = -1$$

$$1.618 - \sqrt{(-1)} = 1 = t$$

$$1.618 - 1 = \sqrt{(-1)}$$

$$t = 0$$

At $t=0$, the GMP= $E=(-1)$

Mathematics is intuitive. Mathematics is a mental construct, or a model that mimics the physical universe as are all languages. We start with the notion of something verses nothing, or "1" verses "0" We have something or nothing. Of course, we have something (ourselves), so convergence is the key to understanding all of reality. That is what Astrothoelogy does; it is the explanation of everything.

$$M = \text{Ln } t$$

$$E = M[1/2\pi]$$

$$Y = y'$$

$$t = KE = 1/2Mv^2$$

$$s = Et \sin \theta$$

$\sin \theta = \cos \theta = v = a = y = y'$ yields space and time.

$$t^2 - t - 1 = E = M = \text{Ln } t = \text{Ln } 1 = 0$$

$$t^2 - t - 1 = 0$$

$$t = 1.618; -0.618$$

$$t = -\sqrt{(-1)}$$

$$(-\sqrt{-1})^2 - (-\sqrt{-1}) - 1 = E$$

$$(1)^2 + 0.618 - 1 = E$$

$$0.618 = E = \sqrt{(-1)} = i$$

$$M = \text{Ln } t$$

$$M = 1/t$$

$$M = E$$

$$E = 1/t$$

$$T = 1/E$$

$$M = \text{Ln } t$$

$$M = \text{Ln } (1/E)$$



$M=E$
 We know $s=t$
 $s=Et \sin \theta$
 $E=1/\sin \theta$
 $M=\ln t=1/\sin \theta$
 $1/\sin 1=M$
 $M=118.83=\text{Mass of the Periodic Table.}$
 Finally, the function of the human mind is $t^2-t-1=0$
 $dE/dt=2t-1$
 $d^2E/dt^2=2=\alpha$
 $d^2E/dt^2-G=0$
 $\iint G=G^3/3=2^3/3=8/3=\text{Superforce.}$
 The human mind can only understand (construct) the universe as a convergence ($\alpha=2$).
 $Y=E$
 $y=M=\ln t$
 $E=M$
 $y'=1/t$
 $y=y'$
 $E=1/t$
 $\ln t=1/t$
 Let $t=1$
 $\ln 1=0$
 $M=\ln 1=E=0$
 $E=1/t=0$
 $t=1/E=1/0$
 $t=1/0=1$

$E=1/t$
 $E=t$
 $t=1/E=1/0$
 $0=1$
 The shorthand version of this argument is:
 $y=y' \Rightarrow 1=0$

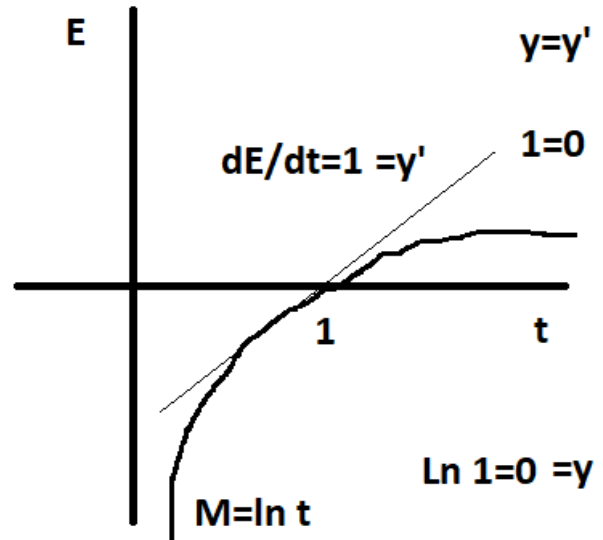


Figure 2. The ln function as Mass showing the function equal to the derivative.

CONCLUSION

We see that Astrotheology provides for a grounding in Mathematical Philosophy. It is tied into other Philosophy's of Mathematics. Astrotheology is the last word on Mathematical Philosophy as it is for Physics.

REFERENCES

1. Cusack, PTE., Astrotheology, Cusack's Universe., J. of Phys Math., Jan 2016.
2. Wikipedia., Philosophy of Mathematics

Citation: Paul T E Cusack, BScE, DULE, "Cusack's Philosophy of Mathematics", American Research Journal of Mathematics, Vol 7, no. 1, 2021, pp. 1-3.

Copyright © 2021 Paul T E Cusack, BScE, DULE, This is an open access article distributed under the Creative Commons Attribution License, which permits unrestricted use, distribution, and reproduction in any medium, provided the original work is properly cited.

